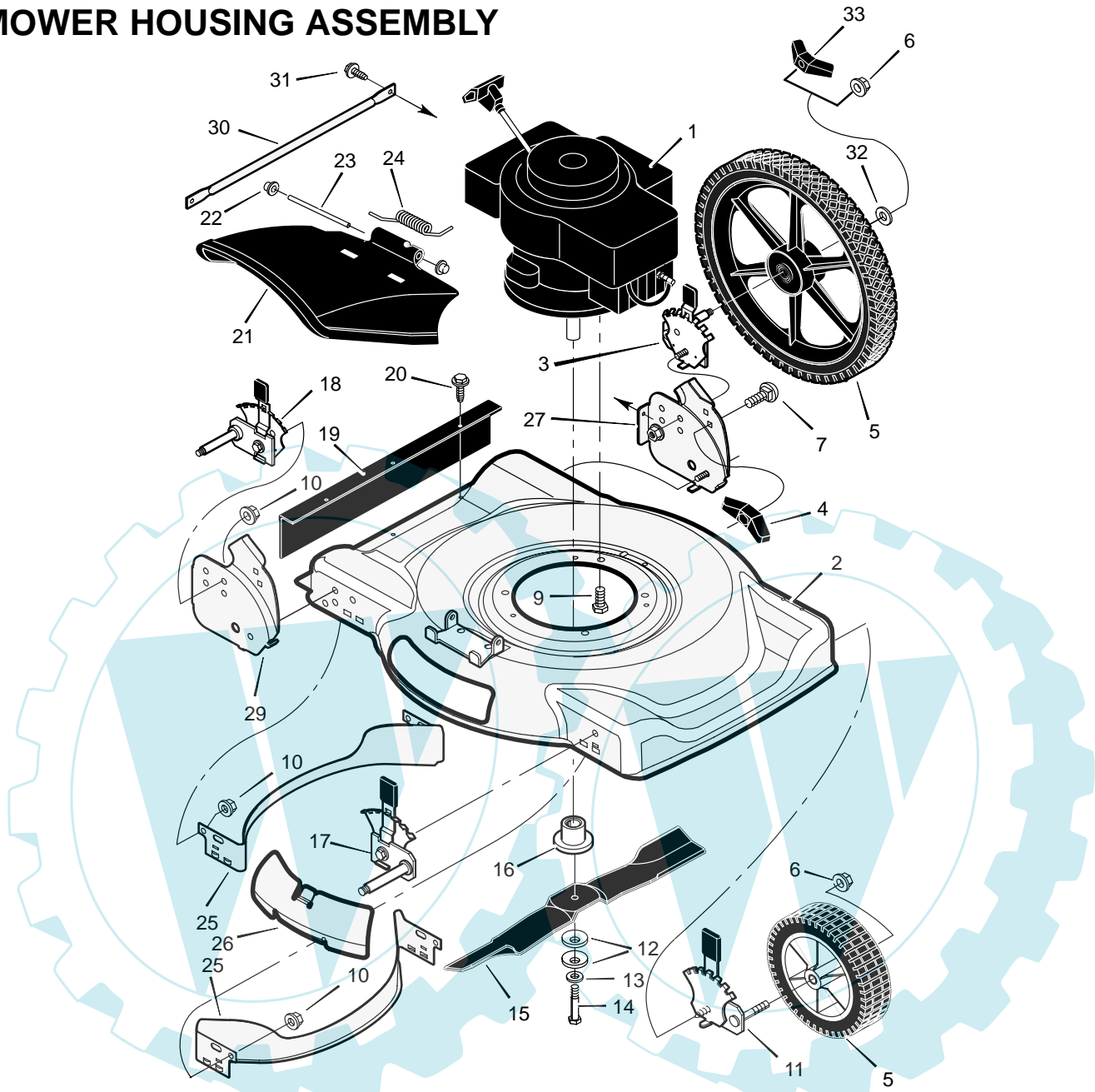


# MODELS 225110x194A

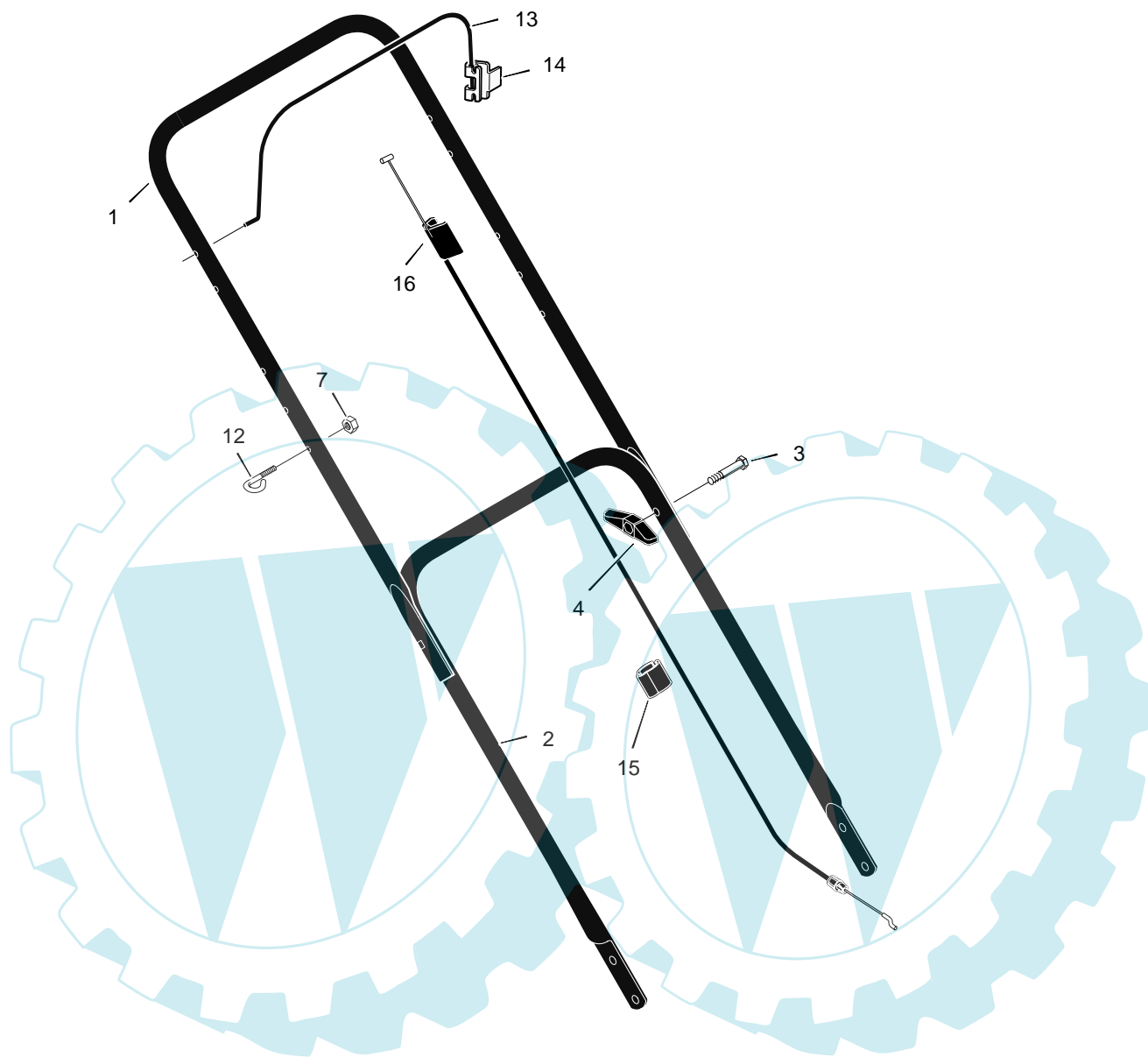
## MOWER HOUSING ASSEMBLY



1	Engine	—	13	Washer	17x124	23	Pin, Pivot	215x11 Z
2	Housing	776024	14	Bolt, Hex	01x142	24	Spring	0166x5
3	Height Adjuster, Left Rear	672645	15	Blade	1101120E701	25	Baffle	672744E701
4	Knob	071495	16	Adapter, Blade	071056	26	Plate, Mulcher	672422 Z
5	Wheel and Tire	672060	17	Height Adjuster, Right Front	672600	27	Bracket, Left Handle	1101305E700
6	Locknut, Flange	015x84	18	Height Adjuster, Right Rear	672644	29	Bracket, Right Handle	1101304E700
7	Bolt, Carriage	002x81	19	Guard, Rear	672738	30	Brace	672728E700
9	Bolt, Engine	0025x6	20	Screw	26x245	31	Screw	26x263
10	Nut	015x68	21	Deflector, Chute	672421	32	Washer	017x91 Z
11	Height Adjuster, Left Front	672601	22	Push-On Cap	028x42	33	Knob, Axle	672449
12	Washer, Belleville	17x137				-	Book, Instruction	F-030403L

# MODELS 225110x194A

## HANDLE ASSEMBLY



1	Handle, Upper (Black)	1101556E701	7	Locknut	15x116	15	Clamp, Cable	1101353
2	Handle, Lower (Black)	71137E701	12	Guide, Rope	071530	16	Engine Stop Cable * Engine Stop Cable #	672840 1101181
3	Bolt	002x77	13	Engine Stop Lever	043653E701			
4	Knob, Plastic	071294	14	Bracket, Stop Lever	1101454			

\* Used on Briggs & Stratton Classic, Sprint, and Quattro and Q-Style engines.

# Used on Briggs & Stratton Quantum engines.